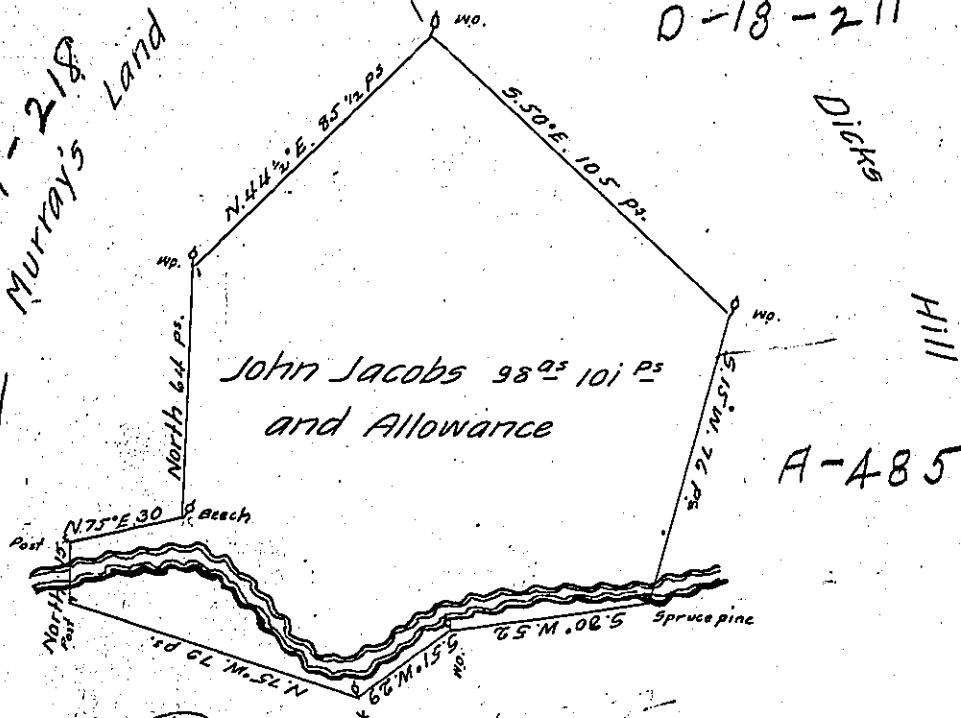


C-139-218  
Murray's Land

D-18-211

Dicks



A-485

D-7-232  
Dicks Hill

A Draught of a Tract of Land situate in Rye Township Cumberland  
 land County Containing Ninty eight Acres and One Hundred and one  
 Perches and the usual Allowance of six p Cent for Roads survey'd  
 for John Jacobs the 9<sup>th</sup> Day of Dec<sup>r</sup> 1769 In pursuance of an Order  
 of Survey Dated the 2<sup>nd</sup> Day of July 1768 No 5091.

John Armstrong

To John Lukens Esq<sup>r</sup>  
 Surveyor General }

D.S

IN TESTIMONY that the above is a copy of the original remaining on file in  
 the Department of Internal Affairs of Pennsylvania, made  
 conformably to an Act of Assembly approved the 16th day of  
 February, 1833, I have hereunto set my Hand and caused  
 the Seal of said Department to be affixed at Harrisburg,  
 this eleventh day of October 1904

*Isaac R. Brown*  
 Secretary of Internal Affairs

